

Plastic welding technology

Plastic pipe welding machines	180 – 187
ROWELD® heating elements	188 – 190
Hot gas welding unit	191
Plastic pipe shears	192
Plastic pipe cutters	193
Plastic pipe cutting & chamfering tools	194 – 196
Hand tools	197
Orbital circular saw for plastic pipes	198
Additional products for plastic welding technology	199

CSC Industrial

5970 Silver Springs Dr.
El Paso, TX 79912

Ph: 915-613-1145 Fax: 915-760-4832
www.cscindustrial.com

Cutting and joining plastic pipes with diameters up to 1200 mm represents no problem with the comprehensive range of tools and equipment from ROTHENBERGER.

The development of CNC plastic welding machines revolutionised the process of plastic welding. The results are welded seams of previously unknown quality and reliability.

With its wide range of cutting and welding machines, ROTHENBERGER permits mobile as well as stationary operation in workshops and on building sites.



ROWELD® plastic welding

Hand tools for plastics processing

Plastic pipe shears

- ROCUT® professional range of shears
- ROCUT® professional pistol-grip shears



Plastic pipe cutters

- Automatik PL
- Tube Cutter 35 MSR, 42 MSR PRO



Plastic pipe cutting & chamfering tools

- ROCUT® 110 and ROCUT® 160



De-burring and chamfering equipment



Plastic welding machines

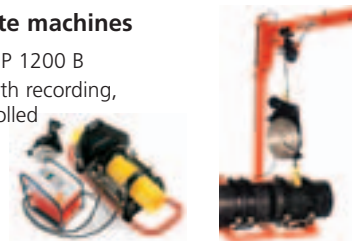
Workshop machines

- P 110 to P 1200 W
- Manual, with recording, CNC-controlled



Building site machines

- P 160 B to P 1200 B
- Manual, with recording, CNC-controlled



Socket fusion with heating elements

- P 63 S-4 to P 125



Resistance welding

- ROFUSE to ROFUSE Print+



Hot gas welding

- ROWELD® HG 1600 E / WG 1600 E



7

CSC Industrial

5970 Silver Springs Dr.
El Paso, TX 79912

Ph: 915-613-1145 Fax: 915-760-4832
www.cscindustrial.com

technology from ROTHENBERGER

Plastic pipe saws

Band saws

- BS 355 M to BS 1200 Plus



Orbital circular saws

- ROCUT® UKS 160/355

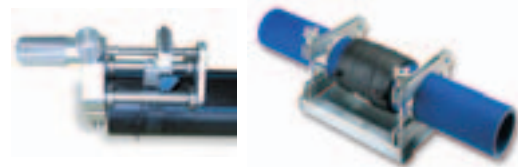


Tools and accessories

For resistance butt welding



For resistance welding



More than 20 years of experience stand behind the practice-proven ROWELD® product range for professional plastic welding technology.

The complete product range is beyond the scope of a main catalogue. Therefore, the following pages only show a selection of the most popular equipment and hand tools for plastic welding procedures.

All professional plastics processors are welcome to ask for our ROWELD® special catalogue. The ROWELD® special catalogue gives you a comprehensive overview of ROTHENBERGER competence in the area of plastic welding technology.

Please also note our highlights: For example, the workshop machine ROWELD® P 315 W3 digital, the DATALINE recording unit, or the ROWELD®-CNC controller, a consistent new development based on the practical experience gained by our customers in the use of the first-generation ROWELD® CNC technology at home and abroad.

Moreover, we have optimised our hydraulic unit to ensure even quicker and safer operation.

New in our plastics product range is the complete family of ROWELD® universal resistance welding units ROFUSE, ROFUSE+, and ROFUSE Print+: With and without the traceability function, for voltages between 8 and 48 V, with barcode reading system, and also suitable for diameters above 630 mm.

Our product range is completed by a wide selection of auxiliary tools.



7

CSC Industrial

5970 Silver Springs Dr.
El Paso, TX 79912

Ph: 915-613-1145 Fax: 915-760-4832
www.cscindustrial.com

Plastic pipe welding machines

ROWELD® P 250 A2

Plastic pipe welding machine

For resistance butt welding of PE, PP, PB, and PVDF pipes and fittings

dia. 40 - 110 mm	SDR 41 - SDR 7,25
dia. 40 - 125 mm	SDR 41 - SDR 11
dia. 40 - 200 mm	SDR 41 - SDR 17,666
dia. 40 - 225 mm	SDR 41 - SDR 26
dia. 40 - 250 mm	SDR 41 - SDR 32,25

Mobile, compact plastic welding machine for use on building sites and in workshops. Particularly suitable for sanitary installations, drain pipe laying, and chimney reconditioning with PVDF liners.

- Electric, high-torque milling unit (450 W) locks into place in the working position:
Protects against unintentional starting and movement
- Mechanical stop adjustable from both sides
Single and two-handed cutting possible

- Heating element (1,500 W) with high-quality antifriction coating:
Long service life and according to DVS regulations
- Direct force transfer:
Precise welding force adjustment on the clear force scale
- Protective cover of transport box serves as machine base
Firm working table always available
- Rugged basic set of 250 mm dia. clamping shells with reducer inserts for 180 – 225 mm dia. plus pipe supports, and 160 mm dia. shells with reducer inserts for 40 – 140 mm dia. plus pipe supports:
Safe and torsion-resistant transfer of welding forces
- Machine carriage runs on ball linings and hardened, chrome-plated guide shafts:
Torsion-resistant for minimum drag pressure and minimum power transfer loss

ROWELD® P 250 A2

Plastic pipe welding machine for diameters of 40 – 250 mm

Complete machine consists of:
Basic unit with electrical milling device, holder for heating element, electronically-controlled heating elements with contact protection, basic 160 and 250 mm dia. clamping shells plus 160 and 250 mm dia. support fork inserts, reducer inserts for dia. 40 – 140 mm and dia. 180 – 225 mm, assembly tools, sheet steel transport box 800 x 520 x 765 mm (L x W x H), and sheet steel case for reducer & support inserts.



Description	Working range mm	Temperature control	⚖ kg	230 V 50/60 Hz	110/115 V 50/60 Hz
ROWELD P 250 A 2, complete	40, 50, 56, 63, 75, 90, 110 126, 160, 180, 200, 225, 250	electronic	127.0	5.5795	5.5796

Plastic pipe welding machines

ROWELD® P 250 A2 basic machine

With electric milling unit (450 W) and heating element holder, pressure device, transport box cover (No. 5.5728).

Description version	kg	230 V 50/60 Hz	110/115 V 50/60 Hz
ROWELD P 250 A2 basic machine	36.4	5.5768	5.5738

No. 5.5768

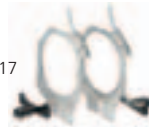


Basic clamping shell sets

Each set consists of: 2 basic clamping shells and 2 support forks

dia. mm	kg	No.	dia. mm	kg	No.
160	7.25	5.5742	250	10.10	5.5717

No. 5.5717



No. 5.5742



Reducer clamp inserts

Each set consists of: Pipe clamping inserts (4 metal half-shells) and support fork inserts (2 metal half-shells) for basic clamping shell set (No. 5.5742).

dia. mm	kg	No.	dia. mm	kg	No.
32	1.89	5.5753	90	1.50	5.5747
40	1.89	5.5752	110	1.26	5.5746
50	1.81	5.5751	114	1.20	5.5745
56	1.83	5.5750	125	1.06	5.5743
63	1.75	5.5749	140	0.80	5.5743
75	1.68	5.5748			



For basic clamping shell set (No. 5.5717)

dia. mm	kg	No.	dia. mm	kg	No.
180	2.46	5.5721	225	1.41	5.5719
200	2.03	5.5718			

Basic clamping tools

For all pipe diameters, especially suitable for welding 45° branches.

dia. mm	kg	No.	dia. mm	kg	No.
left			right		
40	1.90	5.5288	40	1.90	5.5198
50	2.14	5.5287	50	2.14	5.5197
56	2.18	5.5286	56	2.18	5.5196
63	2.10	5.5285	63	2.10	5.5195
75	2.50	5.5284	75	2.50	5.5194
90	2.49	5.5283	90	2.49	5.5193
110	2.46	5.5282	110	2.46	5.5192
125	2.64	5.5281	125	2.64	5.5191
140	3.36	5.5280	140	3.36	5.5190

Basic clamping tools
(special accessories)



Heating element

Antifriction coating, 300 mm dia., 1,500 W

Description version	kg	230 V 50/60 Hz	110 V 50/60 Hz
electronically controlled	5.35	5.5317	5.5854

No. 5.5317



Accessories

Description	kg	No.
Replacement cutter (1 set = 2 blades)	0.10	5.5163
Allen key SW 8	0.02	32.1218

Description	kg	No.
Transport box, red protective cover	25.00	5.5759
Sheet steel case	2.82	5.4020

CSC Industrial

5970 Silver Springs Dr.
El Paso, TX 79912
Ph: 915-613-1145 Fax: 915-760-4832
www.cscindustrial.com

ROTHENBERGER

Plastic pipe welding machines

ROWELD® P 160 SANILINE

Plastic sanitary pipe welding machine

For resistance butt welding of PE, PP, PB, and PVDF pipes and fittings, especially suitable for 45° branches and tight elbows.

- dia. 40 – 110 mm SDR 41 – 7.25
- dia. 40 – 140 mm SDR 41 – 11
- dia. 40 – 160 mm SDR 41 – 17.6

Extremely mobile, compact plastic pipe welding machine of the new generation, for use on building sites and in the workshop. Numerous application possibilities, especially suited for sanitary installations, laying drains & water pipes, roof drainage systems, and chimney reconditioning.

The revolutionary angled-bed design with 40% higher strength, and the optimised force distribution during cutting, matching, and joining guarantee a welded seam of previously unknown quality and reliability in this performance class.

NEW

- **Contact protection:**
Protects the operator from burns, and the heating element coating from damage during transport
- **Safety milling unit:**
 - Safety circuit, and automatic locking in the working position:
Protected against unintentional starting and movement, reduces the risk of injury.
 - Mechanical stop adjustable from both sides:
Single and two-handed cutting possible
 - Milling adapter:
For milling 45° branches in a working range of 40 – 75 mm dia.
- **Basic machine**
 - Direct force transfer, and clear force adjusting scale:
Precise force adjustment
 - Smooth-running machine carriage:
Minimum drag forces
 - Revolutionary angled-bed design:
40% higher strength with simultaneously optimised force distribution
- **Heating element**
 - High-quality antifriction coating
Long service life and according to DVS regulations
- **New universal clamping tools with quick-release coupling**
 - Non-slip reducer clamp inserts 40 – 140 mm dia. with clamping force adjustment:
For safe clamping of pipes, fittings, and tight 45° branches and 90° elbows
 - Multiple clamping possibilities:
All typical fittings used in sanitary installations can be clamped



ROWELD® P 160 SANILINE

Plastic pipe welding machine for diameters of 40 – 160 mm

Complete machine consists of: Basic machine with electric milling unit, milling adapter for 45° branches, electronically controlled heating element with contact and transport protection, basic 160 mm dia. clamping shell set (left & right), 160 mm dia. pipe supports, reducer inserts and supports for 40, 50, 63, 75, 90, 110, and 125 mm dia. in a sheet steel case, assembly tools, mobile working and transport frame.



Description version	Working range mm	Temperature control	kg	230 V 50/60 Hz	110/115 V 50/60 Hz
ROWELD P 160 SANILINE complete	dia. - 40 - 50 - 63 - 75 90 - 110 - 125 - 160	electronic	57.4	5.4000	5.4001

CSC Industrial

5970 Silver Springs Dr.
El Paso, TX 79912

Ph: 915-613-1145 Fax: 915-760-4832
www.cscindustrial.com

Plastic pipe welding machines

ROWELD® P 160 SANILINE basic machine

Basic machine consists of: Milling unit (500 W), heating element (800 W) with contact protection, basic set of 160 mm dia. clamping shells, pipe supports 160 mm dia..

Description version	kg	230 V 50/60 Hz	110/115 V 50/60 Hz
ROWELD® P 160 SANILINE Basic machine	34.4	5.4005	5.4006



ROWELD® P 160 SANILINE basic machine (No. 5.4005)

Reducer clamping inserts

Each set consists of: Reducer inserts (4 half-shells), pipe supports.

Nominal dimensions	kg	No.	Nominal dimensions	kg	No.
40	1.60	5.4083	90	1.55	5.4088
50	1.59	5.4084	110	1.62	5.4089
56	1.59	5.4085	125	1.47	5.4090
63	1.57	5.4086	140	1.43	5.4091
75	1.57	5.4087			



Reducer clamping inserts (No. 5.4083 – 5.4091)

Milling adapter

For milling 45° branches, replaceable cutters.

Description, Version	kg	No.
Milling adapter for 40 – 75 mm dia.	0.63	5.4040

Milling adapter for 45° branches, 40 – 75 mm dia. (No. 5.4040)



Basic clamping shell set

For outer clamping position, especially for welding pressure pipes, consisting of 2 basic clamping shells, left and right.

Description, Version	kg	No.
Basic clamping shell set 160 mm dia.	5.3	5.4082

Basic clamping shell set for outer clamping position (special accessory) (No. 5-4082)



ROWELD® P 160 SANILINE conversion kit

Product features

Conversion of existing ROWELD® P 160 SANILINE to the new universal clamping tools.

Description,	Working range dia. mm	kg	No.
Conversion kit	40, 50, 63, 75, 90 110, 125, and 160	11.15	5.4080

Set consisting of: Basic 160 mm dia. clamping shell set, left and right (No. 5.4082), plus two reducer inserts (left and right) for diameters of 40, 50, 63, 75, 90, 110, and 125 mm.



No. 5.4080

Individual parts and accessories

Description, Version	g	No.
Mounting and transport sub-frame	11.30	5.4015
Sheet steel case for reducer inserts	2.32	5.4020
Open-ended spanner (17 AF) DIN 894	0.05	31.0411
Milling cutter 75 mm (set = 2 blades)	0.06	5.5685
Cutters 35 mm for milling adapter	0.01	5.5686
Replacement heating plate	1.92	5.4048
Milling cutter, carbide 75 mm (set = 2 blades)	0.06	5.5684



CSC Industrial

5970 Silver Springs Dr.
El Paso, TX 79912
Ph: 915-613-1145 Fax: 915-760-4832
www.cscindustrial.com

ROTHENBERGER

Plastic pipe welding machines

ROWELD® P 110

Plastic pipe welding machine

For resistance butt welding of pipes and fittings of PE, PP, PB, and PVDF

dia. 20 – 90 mm SDR 41 – SDR 7.25
 dia. 20 – 110 mm SDR 41 – SDR 11

Light, compact plastic pipe welding machine (basic machine 110 mm dia., 8.5 kg; overall length 450 mm), particularly suited for installation work and in emergencies – also in pipe networks. By adjusting the basic clamping element angles on both sides (15° each side), segmented bends can be produced. Wide range of accessories for all applications.

Milling unit

- Axial adjustment device:
For adaptation when making segmented bends
- Mechanical stop adjustable from both sides:
Single and two-handed cutting possible

Reducer clamp inserts

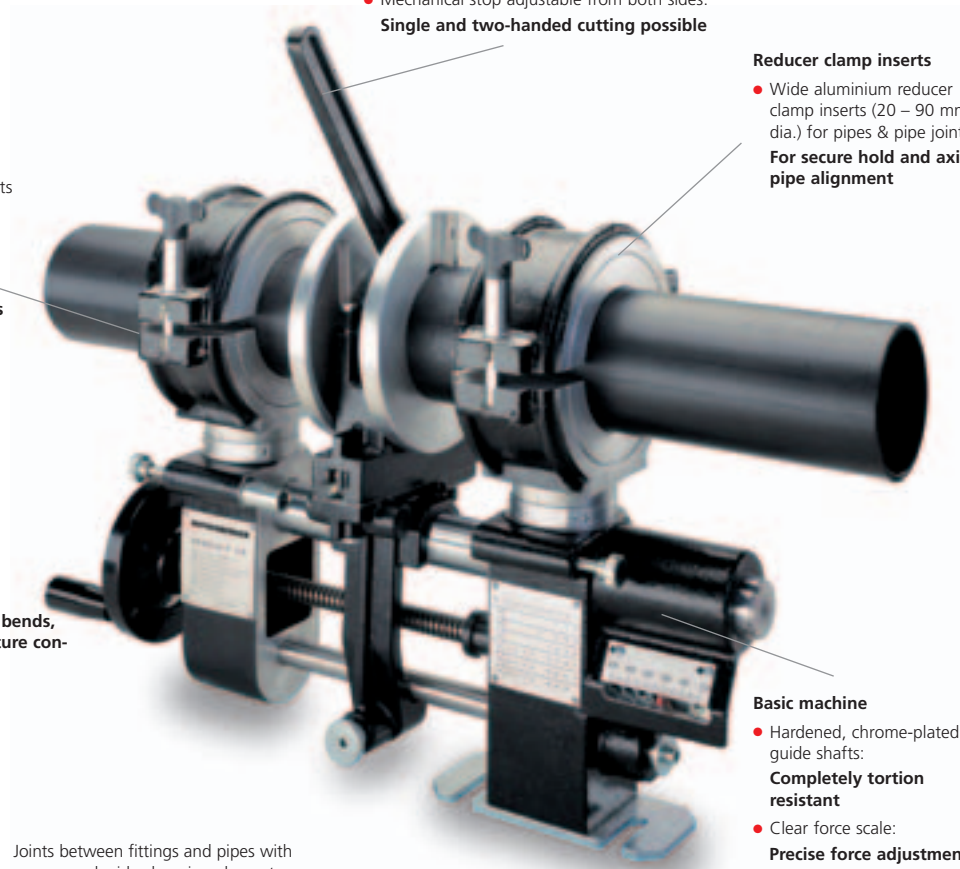
- Wide aluminium reducer clamp inserts (20 – 90 mm dia.) for pipes & pipe joints:
For secure hold and axial pipe alignment

Basic clamping shells

- Angles of the wide basic clamping elements adjustable on both sides (15° each):
Segmented bends can be produced
- Narrow basic clamping elements can also be used
Prerequisite for joining pipes & fittings

Heating element

- High-quality antifriction coating
Long service life and according to DVS regulations
- Electronically controlled heating element
Also intended for welding segmented bends, temperature adjustment and temperature control according to DVS, CEN, and ISO

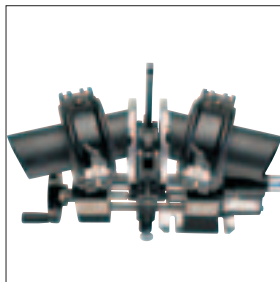


Basic machine

- Hardened, chrome-plated guide shafts:
Completely torsion resistant
- Clear force scale:
Precise force adjustment

By adjusting the basic clamping element angles on both sides (15° each side), segmented bends can be produced

Joints between fittings and pipes with narrow and wide clamping element



ROWELD® P 110

Plastic pipe welding machine for diameters of 40 – 110 mm

Complete machine consists of: Basic machine with table-mounting brackets, manual milling unit, electronically controlled heating element, basic clamping shell set R/R (110 mm dia.), and basic clamping shells R/F, left (110 mm dia.), reducer clamping inserts R/R and R/F for 40 – 90 mm dia., assembly tools, table mounting clamp, and transport box.

Description	Working range mm	Temperature control	kg	230 V 50/60 Hz	110/115 V 50/60 Hz
ROWELD P 110, complete	40, 50, 56, 63, 75, 90, 110	electronic	43.0	5.5844	5.5924

Plastic pipe welding machines

ROWELD® P 110 basic machine

Version	⚖ kg	No.
ROWELD P 110 basic machine with clamp for table mounting	6.8	5.5787



Basic clamping shells 110 mm

Description	⚖ g	No.
for pipe/pipe joints (1 set = 2 clamps.)	2.5	5.5807
for pipe/fitting joints, left, 1 clamp	1.0	5.5808
for pipe/fitting joints, right, 1 clamp	1.0	5.5809



No. 5.5808



No. 5.5807

Reducer clamping inserts for pipe/pipe

Each set consists of 4 aluminium half-shells.

dia. mm	⚖ kg	No.	dia. mm	⚖ kg	No.
20	1.9	5.5318	56	1.6	5.5122
25	1.9	5.5126	63	1.4	5.5121
32	1.8	5.5125	75	1.6	5.5120
40	1.7	5.5124	90	1.1	5.5119
50	1.7	5.5123			



Reducer clamping inserts for pipe/pipe

Reducer clamping inserts for pipe/fitting

Each set consists of 2 metal half-shells.

dia. mm	⚖ kg	No.	dia. mm	⚖ kg	No.
20	0.6	5.5319	56	0.5	5.5130
25	0.6	5.5134	63	0.5	5.5129
32	0.5	5.5133	75	0.4	5.5128
40	0.5	5.5132	90	0.3	5.5127
50	0.5	5.5131			



Reducer clamping inserts for pipe/fitting

Manual milling unit

Version	⚖ kg	No.
with machine holder	1.90	5.5826
Replacement cutters (1 set = 2 blades)	0.05	5.5152



No. 5.5826

Heating element

With antifriction coating, 180 x 130 mm, 800 W.

Description	⚖ kg	230 V 50/60 Hz	110/115 V 50/60 Hz
electronically controlled	2.6	5.5324	5.5918
Table mounting clamp	0.7	5.5524	5.5524



No. 5.5324

Four-shell clamping disc

For centered welding of welding necks.

Description	⚖ kg	No.
Four-shell clamping disc	1.5	5.5199



Special accessory No. 5.5199



Accessories

Description	⚖ kg	No.
Allen key SW 6	0.03	32.1216
Allen key SW 8	0.05	32.1218

Description	⚖ kg	No.
Sheet steel transport box 540 x 345 x 355 mm	14.20	5.5832

CSC Industrial

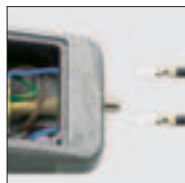
5970 Silver Springs Dr.
El Paso, TX 79912
Ph: 915-613-1145 Fax: 915-760-4832
www.cscindustrial.com

ROTHENBERGER

ROWELD® heating elements



Quick-exchange system for heating plates



Power watts	Heating plate dia. mm	Control Version	kg	230 V 50/60 Hz	110/115 V 50/60 Hz
500	120/45°	electronic	1.80	5.5518	5.5517
800	200°	electronic	3.25	5.5516	5.5851
1,500	300°	electronic	5.35	5.5517	5.5854

ROWELD® HE heating elements

Heating elements for butt welding of PE, PP, PVDF, and PB pipes and fittings with diameters of 20 – 250 mm.

Plastic pipe heating elements for free-handed working or workbench assembly using table-mounting clamp. Circular version. Complete with On/Off switch and mains pilot lamp, signal lamp for heating intervals, and overheat protection. Optimum temperature distribution over the entire working area.

Performance characteristics

- Heating element with high-quality antifriction coating:
Long service life and according to DVS regulations
- Electronic temperature control & monitoring, and temperature setting is secured against inadvertent changing:
Temperature control according to DVS, CEN, and ISO for processing safety
- Quick-exchange system for heating plates:
Saves time and costs

Accessories	kg	No.
Table mounting clamp	0.45	5.5524
Carrying case for 200 mm dia. heating element	2.80	5.5525
Carrying case for 300 mm dia. heating element	5.90	5.5528



No. 5.3885

ROWELD® P 63 S-4

Ergonomic and light socket welding unit for use with heating spigots and heating bushes for diameters of 20 – 63 mm

With three simultaneously usable combinations for welding sockets, pipes, and fittings up to 63 mm dia. Complete with temperature selector switch and mains pilot lamp, signal lamp for heating intervals, and automatic overheat protection. Holder for table mounting clamp.

Performance characteristics

- 3 holes for mounting heating spigots and heating bushes:
High flexibility and combination options for every-day use
- Unit has an integrated floor stand:
Cannot be lost, and is always available when needed
- Electronic temperature control and monitoring:
Temperature control according to DVS, CEN, and ISO for safe operation
- Integrated ergonomic handle:
Light and handy for fatigue-free working

Type	Power Watts	dia. mm	Control Version	kg	230 V 50/60 Hz
P 63 S-4	800	20 – 63 mm	thermostatic	1.78	5.3855
P 63 S-4	800	20 – 63 mm	electronic	1.78	5.3885



No. 5.3875

ROWELD® P 63 S – 4 sets (Form:A)

Socket welding unit complete with heating spigots, Allen key SW 6, socket-head screws, and table mounting clamp in a carrying case.

Working range dia. mm	Control Version	kg	230 V 50/60 Hz
20, 25, 32	thermostatic	4.3	5.3860
20, 25, 32, 40, 50, 63	thermostatic	5.3	5.3865
20, 25, 32,	electronic	4.3	5.3870
20, 25, 32, 40, 50, 63	electronic	5.3	5.3875

ROWELD® heating elements

ROWELD® P 63 - socket welding unit

Light socket welding unit for use with heating spigots and heating bushes for diameters of 20 – 63 mm, with two simultaneously usable combinations for welding sockets, pipes, and fittings up to 63 mm dia.

Complete with tamper-proof temperature selector switch, mains pilot lamp, signal lamp for heating intervals, and overheat protection. Holder for table mounting clamp

Performance characteristics

- Unit with integrated holder for table mounting clamp and a floor stand:

Combination options for every-day use

- Electronic temperature control and monitoring
Temperature control according to DVS, CEN, and ISO for safe operation



No. 5.3500

Type	Power Watts	dia. mm	Control Version	kg	230 V 50/60 Hz
P 63-3	800	20 – 63 mm	electronic	1.61	5.3500
P 63-3	800	20 – 63 mm	thermostatic	1.64	5.3510

ROWELD® P 63-3 sets (Form: A)

Socket welding unit complete with heating spigots, Allen key SW 6, socket-head screws, plus table mounting clamp and floor stand in a carrying case.

Performance characteristics

- With high-quality antifriction coating:
Long service life and according to DVS regulations

Working range mm dia.	Control Version	kg	230 V 50/60 Hz
20, 25, 32	electronic	6.09	5.3540
20, 25, 32, 40, 50, 63	electronic	7.38	5.3545
20, 25, 32	thermostatic	6.11	5.3520
20, 25, 32, 40, 50, 63	thermostatic	7.40	5.3525



No. 5.3545



No. 5.3500

7

ROWELD® P 125

Socket welding unit for use with heating spigots and heating bushes for diameters of 16 – 125 mm, plus adapter plates for butt welding.

With three simultaneously usable welding combinations for free-handed working or workbench assembly using table-mounting clamp Circular version. Complete with On/Off switch and mains pilot lamp, signal lamp for heating intervals, and overheat protection. Optimum temperature distribution over the entire working area.

Performance characteristics

- Electronic temperature control & monitoring, and temperature setting is secured against inadvertent changing:
Temperature control according to DVS, CEN, and ISO for safe operation
- Quick-exchange system for heating plates:
Saves time and costs
- 4 holes for mounting heating spigots and heating bushes:
High flexibility and combination options for every-day use



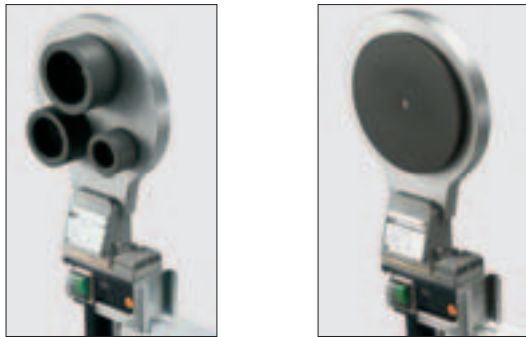
Type	Power Watts	dia. mm	Control Version	kg	230 V 50/60 Hz
P 125	1,300	16 – 125 mm	electronic	3.10	5.5321

CSC Industrial

5970 Silver Springs Dr.
 El Paso, TX 79912
 Ph: 915-613-1145 Fax: 915-760-4832
 www.cscindustrial.com

ROTHENBERGER

ROWELD® heating elements



ROWELD® P 125 Set (Form A)

In carrying case with socket welding unit (1,300 W), heating spigots & bushes, adapter plate (1 set = 2 plates), Allen key SW 5, socket-head screws, socket pin, table mounting clamp, and floor stand.

Performance characteristics

- With high-quality antifriction coating:
Long service life and according to DVS regulations

Working range mm dia.	Control Version	kg	230 V 50/60 Hz
63, 75, 90, 110, 125	electronic	17.05	5.5546

Heating spigots & sockets (Form A) P 63 – 3

Performance characteristics

- With high-quality antifriction coating:
Long service life and according to DVS regulations

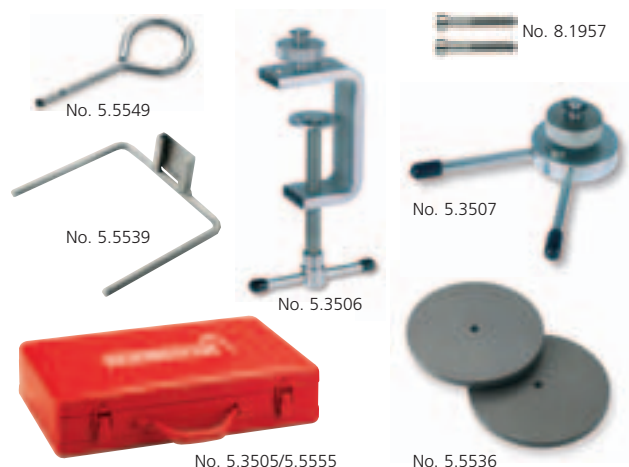
Description	kg	No.	Description	kg	No.
20	0.08	5.3511	40	0.26	5.3514
25	0.10	5.3512	50	0.37	5.3515
32	0.17	5.3513	63	0.60	5.3516

Heating spigots & sockets (Form A) P 63 – 2 and P 125

Performance characteristics

- With high-quality antifriction coating:
Long service life and according to DVS regulations

Description	kg	No.	Description	kg	No.
16	0.06	5.5585	40	0.26	5.5592
17	0.06	5.5586	50	0.37	5.5593
18	0.08	5.5587	63	0.60	5.5594
19	0.08	5.5588	75	0.89	5.5595
20	0.08	5.5589	90	1.33	5.5596
25	0.10	5.5590	110	2.075	5.5597
32	0.17	5.5591	125	2.33	5.5598



Accessories P 63 - 3 and P 125

Description	kg	No.
Adapter plate for butt welding ROWELD P 125 dia. 160 mm, (1 set = 2 plates.) Antifriction coating	1.15	5.5536
Table mounting clamp for P 63-3	0.49	5.3506
Table mounting clamp for P 125	0.45	5.5524
Floor stand for ROWELD P 63-3	0.25	5.3507
Floor stand for ROWELD P 125	0.44	5.5539
Allen key SW 6 for P 63-3	0.02	32.1216
Allen key SW 6 for P 125	0.02	32.1215
Socket pin for heating spigot of P 63-3 and P 125	0.01	5.5549
Allen key SW 5, M 6 x 40 for heating spigots, heating sockets, and adapter plate for P 125	0.01	8.1957
Carrying case for ROWELD P 63-3 Set	3.25	5.3505
Carrying case for ROWELD P 125 Set	4.70	5.5555

Hot gas welding units

ROWELD® HG, WG



Applications:

- Hot air welding, shaping and shrinking of thermoplastics in the workshop or on the building site.
- Processing of roofing materials

- Welding of sheets, films, tents, in boat building, on refuse dumps, for swimming pools, automotive industry, and tank construction
- Shrinking of fittings and sleeves in the electrical industry
- Repair and processing of plastic parts in automobile repair shops

ROWELD® HG 1600 E

Performance characteristics

- Light, handy, and robust:
Suitable for continuous operation
- 1500 W heating element, and electronic temperature control:
Welding temperature up to 700° C, continuously adjustable
- Additional cooling stage:
Gentle cooling protects heating elements when work is completed, without changing the preselected heating
- Easy mounting of nozzles in all working applications:
Clip-on speed nozzles, no screws
- Heater assembly easily replaceable:
Service-friendly



Description	g	230 V 50/60 Hz
ROWELD HG 1600 E, complete with 5 mm tubular nozzle (No. 5.5769)	1,360	5.5770

ROWELD® WG 1600 E

For connection to external air supply

Air demand: 80 – 250 l/min (compressor DT 16)

Performance characteristics

- Powerful, light (700 g), and handy hot gas welding unit:
Ideal for stationary use in a workshop
- 1500 W heating element, and electronic temperature control:
Welding temperature up to 700° C, continuously adjustable
- In case of an air supply failure, a safety circuit reduces the heating power, and switches it off completely after 30 seconds:
Active device protection for a long service life



Description	g	230 V 50/60 Hz
ROWELD WG 1600 E, complete with 5 mm tubular nozzle (No. 5.5769)	700	5.5780

Nozzles for HG 1600 E and WG 1600 E

Description	dia. mm	g	No.
Universal tubular nozzle	5	40	5.5769
Wide slot nozzle, angled	20	50	5.5778
Wide slot nozzle, angled	40	60	5.5779
Speed nozzle for round welding cable	3	20	5.5773
Speed nozzle for round welding cable	4	20	5.5774
Speed nozzle for round welding cable	5	20	5.5775
Triangular speed nozzle for profiled welding cable	5	20	5.5776
Triangular speed nozzle for profiled welding cable	7.5	20	5.5777
Tacking nozzle		20	5.5772
Shrinking reflector		60	5.5783



Spare parts and accessories

Description	g	No.
Pressure roller, 45 mm for overlap welding of sheets	210	5.5816
Universal scraper set for preparing welded seams (consisting of handle, triangular, heart, and multi-shape blades)	210	5.3380
Phillips screwdriver for nozzle mounting	40	7.3421
Heating element 1500 W	80	5.5800
Spare carbon brushes (1 set = 2 brushes) for HG 1600 E	10	5.5788
Reinforced plastic pipe, 3 m (for WG 1600 E)	350	5.5782
Sheet steel case for ROWELD HG 1600 E	4,400	5.5799



CSC Industrial

5970 Silver Springs Dr.
El Paso, TX 79912

Ph: 915-613-1145 Fax: 915-760-4832
www.cscindustrial.com

ROTHENBERGER

Plastic pipe shears

ROCUT® Professional

For precise cutting of PP, PE, PEX, PB, and PVDF pipes. Rugged precision shears for effortless cutting of plastic pipes.

- Double-sided blade and ratchet support:
Precise force transfer and precise guided cutter feed

- Stainless steel blade with V-edge:
Pin-point precision without deformation



- Wide pipe support:
Precise, right-angled cut

- Rubberised handle:
Secure grip

- Releasing lever:
Automatic, controlled opening of the blade at the push of a button

- Lockable lever:
Shear arms lockable in transport position

- Ideally meshed cutting curve:
Minimum effort during cutting

No. 5.2000



ROCUT® 26 TC

Plastic pipe shears for precise cutting of PP, PE, PEX, PB, and PVDF pipes up to 26 mm diameter.

Description	dia. mm	dia. inches	g	No.
ROCUT 26 TC	0 – 26	0 – 1 1/4"	370	5.2005



ROCUT® Professional 42 TC

Plastic pipe shears for precise cutting of PP, PE, PEX, PB, and PVDF pipes up to 42 mm diameter.

Description	dia. mm	dia. inches	g	No.
ROCUT 42 TC	0 – 42	0 – 1 5/8"	447	5.2000
Spare stainless steel blade			120	5.2042



ROCUT® Professional 50 TC

Plastic pipe shears for precise cutting of PP, PE, PEX, PB, and PVDF pipes up to 50 mm diameter.

Description	dia. mm	dia. inches	g	No.
ROCUT 50 TC	0 – 50	0 – 2"	600	5.2010
Spare stainless steel blade			150	5.2011



ROCUT® Professional 75 TC

Plastic pipe shears for precise cutting of PP, PE, PEX, PB, and PVDF pipes up to 75 mm diameter.

Description	dia. mm	dia. inches	g	No.
ROCUT 75 TC	0 – 75	0 – 3"	1,600	5.2015
Spare stainless steel blade			190	5.2016

Plastic pipe cutters

ROCUT® Professional

Pistol-grip pipe cutting shears

Light and precise single-handed shears for cutting and trimming PP, PE, PEX, PB, and PVDF pipes.

Performance characteristics

- Pistol-grip design with ratchet mechanism:
Powerful and fatigue-free cutting even of large wall thicknesses with minimum effort
- Adjustable basic cutter position with ROCUT® 26 /42 S:
Fast cutting of small pipe diameters up to 26 mm
- Blade retracts quickly at the push of a button:
Fast working without interruptions



No. 5.5005



No. 5.5015

Description	dia. mm	dia. inches	g	No.
ROCUT 35 S	6 – 35	1/4 – 1 3/8 "	740	5.5005
Spare stainless steel blade			30	5.5006
ROCUT 26/42 S adjustable	6 – 42	1/4" – 1 5/8"	950	5.5015
Spare stainless steel blade			60	5.5007

Plastic pipe cutter Automatik PL

AUTOMATIK PL telescopic ratchet pipe cutter

The most widespread tool for simple and precise right-angle cutting of PE, PP, PEX, PB, and PVDF pipes as well as sound-insulated drain pipes and multi-layer composite pipes.

Performance characteristics

- Monoblock aluminium construction:
Maximum strength
- Large, ergonomically optimised metal handle:
Optimum. fatigue-free operation
- Telescopic ratchet guide:
Fast adjustment on the tube's outer diameter
- Automatic retract:
Fast opening
- High-quality DURAMANT surface treatment and special epoxy coating:
Hard-wearing, non-slip, and abrasion-resistant surface
- Removable internal pipe deburrer, retracts into the cutter body, with rotatable HSS blade that adapts to the workpiece contour.
Only one tool for cutting and deburring
- Hardened, specially-ground cutter wheels
Optimum cuts with different wall thicknesses



No. 7.0032

Removable, internal pipe deburrer



Description	dia. mm	dia. inches	Cutting depth	g	No.
Size I	6–67	1/4–2.5/8"	7.0	710	7.0031
Spare cutter wheels					
Standard (3 pcs.)			7.0	10	7.0028D
Size II	50–125	2– 5"	13.0	1,600	7.0032
Spare cutter wheels					
Standard (3 pcs.)			13.0	20	5.5054D
Special (2 pcs.)			8.6	10	5.5053D
Size III	110–168	4–6.5/8"	16.0	1,770	7.0033
Spare cutter wheels					
Standard (2 pcs.)			16.0	20	5.5074D
Special (2 pcs.)			8.6	10	5.5053D

TUBE CUTTER 35 MSR, 42 MSR PRO and 42 PRO PVC

Rugged telescopic pipe cutter

Models 35 MSR and 42 MSR PRO for multi-layer composite pipe Model 42 PRO PVC for PVC pipes

Performance characteristics

- Uniform small working radius of 123 mm:
Convenient working, also in tight surroundings
- Optimised cutting wheel and precise telescopic guidance:
Right-angled cuts and burr-free trimming
- Feed synchronised with revolutions:
Fast and simple adjustment of the working range
- Ergonomically optimised metal handle:
Optimum. fatigue-free operation
- Integrated, retractable internal pipe deburrer:
Only one tool for cutting and deburring
- Spare cutter wheel in the handle:
Always at hand, immediately available



No. 7.0180/7.0109

Description	dia. mm	dia. inches	g	No.
TC 35 MSR	6 - 32	1/4 - 1.1/4"	440	7.0108
TC 42 PRO MSR	6 - 42	1/4 - 1.5/8"	510	7.0109
Spare cutter wheels (5 pcs.)			19	7.0188D
TC 42 PRO PVC	6 - 42	1/4 - 1.5/8"	510	7.0072
Spare cutter wheels (3 pcs.)			10	7.0028D

CSC Industrial

5970 Silver Springs Dr.
El Paso, TX 79912

Ph: 915-613-1145 Fax: 915-760-4832
www.cscindustrial.com

ROTHENBERGER

Plastic pipe cutting & chamfering tools

ROCUT®

The cutting & chamfering system tool for right-angled cutting and chamfering (15°) of thin and thick-walled PVC, PE, PP, PEX, PB, and PVDF pipes, as well as sound-insulated drain pipes with utmost precision in a single operation.

ROCUT 110 dia. 32 – 110 mm
ROCUT 160 dia. 110 – 160 mm

Performance characteristics

- Cutter blade shaft with automatic copying (standard with ROCUT® 160, optional with ROCUT® 110):
Ensures uniform chamfering of the entire pipe circumference, also with non-circular pipes
- Insertable plastic clamping shells:
For adapting to different outer pipe diameters
- Continuously adjustable pipe clamping pressure, and clamping shells with compensating springs:
Centered and safe pipe clamping, also with out-of-tolerance pipes
- Universal adapter for a wide range of accessories:
For example, cutter wheel instead of cutter blade insert for PE, PP, PEX, PB, and sound-insulating pipes
- Removable internal pipe deburrer, retracts into the cutter body, with rotatable HSS blade:
Only one tool system required for cutting, chamfering, and deburring
- Cutter blade shaft can be mounted with 180° offset:
Pipe cutting also possible without chamfering

- Carbide cutting blade
Extremely long service life with optimum cutting geometry



- Cutter blade insert (standard):
For PVC, PE, PP, and PVDF pipes



- Removable internal pipe deburrer, retracts into the cutter body, with rotatable HSS blade:
Only one tool system required for cutting, chamfering, and deburring

Internal deburrer is stored in the handle

- Cutter wheel insert
Special accessories for PE, PP, PEX, PB, and sound-insulated pipes

For free-handed working



and clamping in a parallel vice



No. 5.5035

Plastic pipe cutting & chamfering tools

ROCUT® 110 Sets

In plastic case with basic unit (No. 5.5020), internal deburrer, (No. 5.5018), clamping shell sets, standard cutter blade shaft and cutter blade insert (No. 5.5029), or cutter blade shaft and cutter wheel (No. 5.4950) (for sound-insulated pipes).

Description	Working range mm	kg	No.
ROCUT 110 Set	50, 75, - 110	3.9	5.5035
ROCUT 110 Set for sound-insulated pipes	58, 78, - 110	3.9	5.5037

ROCUT® 160 Sets

In plastic case with basic unit (No. 5.5030), internal deburrer, clamping shell sets (No. 5.5063), cutter blade shaft with automatic copying and cutter blade insert (No. 5.5019).

Description	Working range mm/inches	kg	No.
ROCUT 110 Set	110, 125, 160	5.6	5.5063



(Set) No. 5.5063

ROCUT® 110

Basic unit (110 mm dia.) for use with clamping shells 32 – 100 mm dia., without internal deburrer, with standard cutter blade shaft and cutter blade insert (No. 5.5029).

Description	dia. mm	g	No.
Basic unit ROCUT 110	110	2,450	5.5020
Set of clamping shells	100	110	5.5048
(1 set = 2 half shells)	90	150	5.5021
	80	170	5.5047
	78	180	5.5062
	75	210	5.5022
	63	220	5.5023
	58	230	5.5013
	56	270	5.5024
	52	280	5.5034
	50	290	5.5025
	40	300	5.5027
	32	330	5.5026

ROCUT® 110 with cutter wheel
(No. 5.4950, special accessory)



No. 5.5020

ROCUT® 160

Basic unit (160 mm dia.) for use with clamping shells 110 – 140 mm dia., without internal deburrer, with cutter bar shaft, automatic copying, and cutter blade insert (No. 5.5019).

Description	dia. mm	g	No.
Basic unit ROCUT 160	160	3,450	5.5030
Set of clamping shells	140	180	5.5031
(1 set = 2 half shells)	125	250	5.5032
for Sizes 1 and 2	110	310	5.5033

ROCUT® 160 with cutter blade insert



No. 5.5030

CSC Industrial

5970 Silver Springs Dr.
El Paso, TX 79912

Ph: 915-613-1145 Fax: 915-760-4832
www.cscindustrial.com

ROTHENBERGER

Plastic pipe cutting & chamfering tools



HM cutter blade inserts

For ROCUT® 110 and ROCUT® 160

Version, Description	dia. mm	g	No.
Cutter blade shaft with automatic copying and HM cutter blade inserts	7.5	110	5.4960
Cutter blade shaft with automatic copying and HM cutter blade inserts	12.5	120	5.4961
Spare HM cutter blade insert for parting and chamfering 15°	7.5	10	5.5029
Spare HM cutter blade insert for parting and chamfering 15°	12.5	20	5.5019



Cutter wheels

For ROCUT® 110 and ROCUT® 160

Version, Description	dia. mm	g	No.
Cutter wheel shaft with cutter wheel 5.5074.	16.0	130	5.4950
Spare cutter wheels (2 pcs.)	8.6	10	5.5053D
Spare cutter wheels (3 pcs.)	13.0	20	5.5054D
Spare cutter wheels (2 pcs.)	16.0	20	5.5074D



Accessories and individual parts

For ROCUT® 110 and ROCUT® 160



Version, Description	g	No.
Internal deburrer with blade insertable into handle of basic unit	150	5.5018
Cutter blade for internal deburrer	10	2.1652
Plastic carrying case for ROCUT 110850		5.5016
Plastic carrying case for ROCUT 1601400		5.5017

CSC Industrial

5970 Silver Springs Dr.
El Paso, TX 79912

Ph: 915-613-1145 Fax: 915-760-4832
www.cscindustrial.com

EASYGRIP

Automatic strap wrench for plastic pipes.

The indispensable assistant for socket welding plastic pipes with large diameters.

Performance characteristics

- Fast, ratchet operated clamping
Quick adaptation to the required pipe diameter
- Centered prismatic support:
No damage to pipe surface, and no pipe deformation
- Good-gripping special nylon strap:
Secure grip



No. 5.5075

Description	dia. mm	dia. inches	g	No.
EASYGRIP	20 - 160	3/4 - 6"	1,000	5.5075
Spare strap			110	5.5076

UNIGRAT fast deburrer

Fast deburrer with HSS universal blade.

For deburring edges on all conventional plastic pipes and plastic plates.

Performance characteristics

- Small and handy:
Ideal as a permanent companion



Description	g	No.
UNIGRAT fast deburrer	30	2.1660

GRATFIX HSS deburrer

Fast deburrer with replaceable HSS universal blade.

For deburring edges on all conventional plastic pipes and plastic plates.

Performance characteristics

- Blade reservoir in the handle:
Always a spare blade at hand



No. 2.1655



No. 2.1652

Description, Version	g	No.
GRATFIX HSS fast deburrer	50	2.1655
Spare HSS blade	10	2.1652

Plastic pipe chamfering unit

Plastic pipe chamfering unit

With replaceable blades for 15° outer chamfers on plastic pipes.

Performance characteristics

- Continuously adjustable for wall thicknesses:
Flexible in use



No. 5.5051



Description, Version	dia. mm	g	No.
Chamfering unit Size 1	16 - 110	720	5.5050
Chamfering unit Size 2	32 - 160	800	5.5051
Spare blade for Sizes 1 and 2		30	5.5058

CSC Industrial

5970 Silver Springs Dr.
El Paso, TX 79912
Ph: 915-613-1145 Fax: 915-760-4832
www.cscindustrial.com

Orbital circular saw for plastic pipes

ROCUT® UKS 160/355

High-performance orbital circular saw for fast, precise, perfectly aligned, and true-angled cutting of plastic pipes with 160 – 355 mm OD on the building site or in the workshop.

Suitable for PE, PP, and PVC pipes with a minimum wall thickness of 8 mm. Together with high cutting speeds, the optimised pipe centering by means of central clamping ensures efficient and safe pipe cutting operations.

Performance characteristics

- High cutting speed:
Efficient and rational working
- Central clamping
Optimum pipe centering
- Wide, rubberised clamping and guide rollers:
Right-angled cuts with no misalignment
- Adjustable cutting depth limit with fine setting:
Highly repeatable sequential operations
- Safely protected saw blade:
Safe working

• Powerful 1520 W motor with high cutting speed:
Time-saving and efficient working

• Adjustable cutting depth with fine setting:
Highly repeatable cuts

• TÜV-tested saw blade guard:
Safe operation

• Central clamping
Optimum pipe centering

• Wide, rubberised clamping and guide rollers:
Right-angled cuts with no misalignment



7



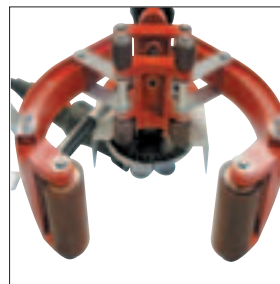
ROCUT® UKS 160/355

Orbital circular saw for cutting plastic pipes with diameters of 160 - 355 mm, for PE, PP, and PVC pipes with a minimum wall thickness of 8 mm. Time-saving through efficient working procedure, drive motor 230 V; 50/60 Hz; 1520 W.

Description, Version	kg	No.
ROCUT UKS 160/355, complete with HM saw blade (No. 5.5505), without transport box	15.4	5.5620
Spare HM saw blade 180 x 30 mm with spacer	0.6	5.5505
Transport box 700 x 350 x 500 mm	17.5	5.5655

Six rubberised clamping & guide rollers ensure right-angled cuts with no misalignment.

Secure clamping and optimum pipe centering are guaranteed by the central, trapezoidal clamping device.



CSC Industrial

5970 Silver Springs Dr.
El Paso, TX 79912

Ph: 915-613-1145 Fax: 915-760-4832
www.cscindustrial.com

Additional products for plastic welding technology

Other workshop and ...

+ ... building site welding machines

ROWELD® P 315 W3

90 – 315 mm dia.

No. 5.4800



ROWELD® P 250 BCNC

90 – 1200 mm dia.

No. 5.4730



ROWELD® P 500 W2

315 – 500 mm dia.

No. 5.5425



ROWELD® P 630 B2

315 – 630 mm dia.

No. 5.3300



BS 630 PLUS

up to 630 mm dia.

No. 5.5606



ROWELD® P 1200 B3

800 – 1,200 mm dia.

No. 5.4250



All professional plastics processors are welcome to ask for our **ROTHENBERGER ROWELD® special catalogue**.

The ROWELD® special catalogue gives you a comprehensive overview of ROTHENBERGER competence in the area of plastic welding technology and accessories.

CSC Industrial

5970 Silver Springs Dr.
El Paso, TX 79912

Ph: 915-613-1145 Fax: 915-760-4832
www.cscindustrial.com